



Sheer
Driving Pleasure



THE X1

THE NEW BMW X1.



DISCOVER MORE DIGITALLY: THE NEW BMW BROCHURE APP.



More information, more sheer driving pleasure: The new BMW brochure app offers a digital and interactive BMW experience like never before. Download the BMW brochure app for your smartphone or tablet now and rediscover your BMW.

INNOVATION AND TECHNOLOGY.



18 Powertrain and suspension



20 Driver assistance
21 Safety



22 Connectivity and infotainment
23 Comfort and functionality

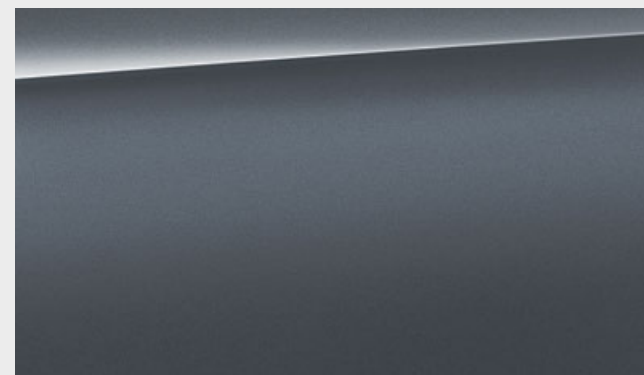
EQUIPMENT.



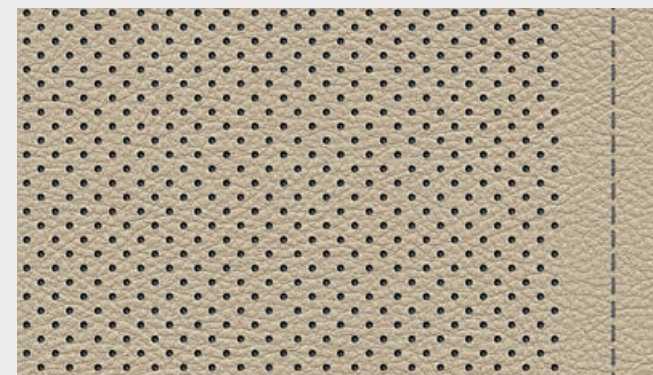
24 Models and Lines



32 Additional equipment



36 Exterior colour world



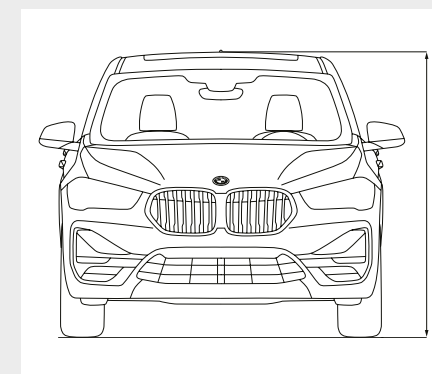
38 Interior colour world



40 Wheels and tyres



41 Original BMW Accessories



42 Technical data



WILD
LIFE.



A LOT OF LIFE,
A LOT OF STYLE.





**MULTIPLIES
YOUR OPTIONS
BY THE FACTOR X.**



**MAKES
YOU SMILE
FASTER.**





**HERE AND NOW
THERE'S ENOUGH ROOM
FOR A LOT OF WOW.**

**YOUNG, WILD, FAST
LOOKING FOR SUITABLE
COUNTERPART.**





**LONG DISTANCES? SURE.
CONTINUOUS STARES?
ALWAYS.
BORING? NEVER!**

X through and through. The new BMW X1.

Authentic modern exterior design Sporty, powerful appearance with striking front view II Adaptive LED headlights* and LED rear lights* II M Sport package* with a new, powerful look.

Outstanding driving characteristics High agility and driving dynamics II Intelligent all-wheel drive system BMW xDrive. **Innovative drive technology** Plug-in hybrid model BMW X1 xDrive25e¹ II Powerful and efficient BMW TwinPower Turbo engines. **Comprehensive driver assistance** Driving Assistant Plus* II Traffic jam assistant* II Active cruise control with Stop&Go function* II Parking assistant*.

Easy connectivity 10.25" Control Display with touch control* II Gesture Control II BMW Head-Up Display^{2,*} II BMW Connected+ and Concierge Services*. **Attractive interior, lots of space and high flexibility** Sporty-aesthetic design II High-quality materials and workmanship II 40:20:40 divisible rear seat backrest II Sliding rear seat bench for more legroom or more luggage space* II Lights package* with Ambient light in the interior and welcome light with LED projection "X1" for the driver's side in the exterior.

The future belongs to the brave.

The new BMW X1.

The new BMW X1.



¹ Available from 03/2020.

² The information in the BMW Head-Up Display is not fully visible when viewed through polarised sunglasses. Content shown will depend on the equipment options chosen. Further optional equipment is required to display specific items.

* Available as optional equipment. The availability of some equipment features and functions depends on engine variants or additional options. The market and production availability may vary. You can find detailed information about terms, standard and optional equipment at www.bmw.com or from your BMW Partner.

► **BMW EFFICIENTDYNAMICS.**
LESS EMISSIONS. MORE DRIVING PLEASURE. ◀

■ Standard equipment □ Optional equipment



ENGINE HIGHLIGHTS OF THE NEW BMW X1.

BMW X1 xDrive20i
BMW TwinPower Turbo 4-cylinder petrol engine
with 141 kW (192 hp) and 280 Nm torque
Acceleration 0–100 km/h: [7.4] s
Top speed: [223] km/h
Combined fuel consumption: [6.3–6.7] l/100 km
Combined CO₂ emissions: [143–152] g/km

BMW X1 xDrive20d
BMW TwinPower Turbo 4-cylinder diesel engine
with 140 kW (190 hp) and 400 Nm torque
Acceleration 0–100 km/h: [7.8] s
Top speed: [219] km/h
Combined fuel consumption: [4.7–5.0] l/100 km
Combined CO₂ emissions: [123–131] g/km

□ The **adaptive suspension** makes it possible to adjust the damper characteristics to suit the driving situation and optimises ride comfort and driving dynamics.

□ The **M Sports steering** creates direct and agile driving behaviour and less physical effort is required to turn the wheel.

□ The **M Sport suspension** is set 10 mm lower and delivers a more athletic suspension design.

□ The **8-speed Steptronic Sport transmission*** offers incredibly sporty gear changes. Whether automatic or manual using gearshift paddles or gear lever.

□ The high-performance **M Sport brake*** is distinguished by exclusive dark blue brake callipers with M lettering and outstanding braking performance.

■ For maximum traction, driving dynamics and safety, the **BMW xDrive all-wheel drive system** provides variable drive power distribution to the front and rear axles.

AERODYNAMICS

■ Targeted aerodynamic changes to the vehicle body such as air vent control, Air Curtain and Air Blades improve its air resistance. The airflow-optimised components contribute not only to reduced fuel consumption, but also reduce the level of noise in the interior.

BMW EFFICIENT DYNAMICS.

■ Get more out of every litre of fuel with BMW EfficientDynamics: better performance, greater efficiency and a heightened driving pleasure. Technical innovations that lower fuel consumption while simultaneously increasing driving pleasure mean that pure dynamics come standard in every BMW.

STEPTRONIC TRANSMISSION

□ The 8-speed Steptronic transmission* ensures particularly smooth gearshifts and outstanding driving comfort, thanks to fast engine speed transitions and tightly spaced gear ratios. It unites superb comfort with impressive dynamics and increased fuel efficiency.

DRIVING EXPERIENCE CONTROL INCL. ECO PRO.

■ The Driving Experience Control* lets the driver choose between the standard COMFORT mode, ECO PRO mode which is geared towards efficiency, and SPORT mode which enables even more dynamic driving. ECO PRO mode adjusts the characteristics of the accelerator, Steptronic transmission and the heating/air conditioning settings to make the drive as fuel-efficient as possible.

BRAKE ENERGY REGENERATION

■ With Brake Energy Regeneration, the alternator generates electricity primarily when you brake or take your foot off the accelerator. Previously unused kinetic energy is thereby transformed into electrical energy and fed into the battery.

OPTIMUM SHIFT INDICATOR

■ The Optimum Shift Indicator shows the most efficient gear for a given driving situation. In all BMW models, the display informs you of the current gear and gives shifting recommendations. This noticeably lowers fuel consumption through perfectly timed gearshifts, particularly in urban environments and over long distances.



*The availability of some equipment features and functions depends on engine variants or additional options. The market and production availability may vary. You can find detailed information about terms, standard and optional equipment at www.bmw.com or from your BMW Partner.

The Standard and Optional equipment may differ between countries. Please consult your local BMW partner for more information.

The data for fuel consumption, CO₂ emissions and energy consumption are determined in accordance with the measurements processes as defined by European Regulation (EU) 2007/715 in the applicable version. Data refer to a vehicle with base-level equipment in Germany, and the ranges account for differences according to the selected wheel and tyre size and the optional equipment and may change during the configuration process. Figures have been determined on the basis of the new WLTP test cycle and have been converted back into NEDC figures for comparability. For these vehicles, values other than those specified here may apply for the assessment of taxes and other vehicle-related charges that are (also) based on CO₂ emissions.

DRIVER ASSISTANCE.

BMW Personal CoPilot. By your side, when you decide.

- The **safety package Driving Assistant^{1,*}** includes camera-based assistance systems, such as Lane Departure Warning, Approach control warning, High-beam assistant and Speed Limit Info. The Approach control warning and Person warning with light city braking function warns of collisions at speeds between 10 and 60 km/h, while the Lane Departure Warning causes the steering wheel to vibrate as a warning when the lane is unintentionally changed at 70 km/h or over.
- The **Driving Assistant Plus*** equipment provides a clear improvement in safety and comfort. It includes the Approach control warning and Person warning with light city braking function, Lane Departure Warning, the High-beam assistant, the Speed Limit Info, camera-based Cruise control with Stop&Go function as well as the Traffic jam assistant.
- The **camera-based cruise control with Stop&Go function*** maintains your preselected speed, as well as the distance to the vehicle ahead. The vehicle takes over accelerating and braking and keeps the predetermined distance to the vehicle ahead even in slow-moving traffic and down to a stand-still in traffic jams.

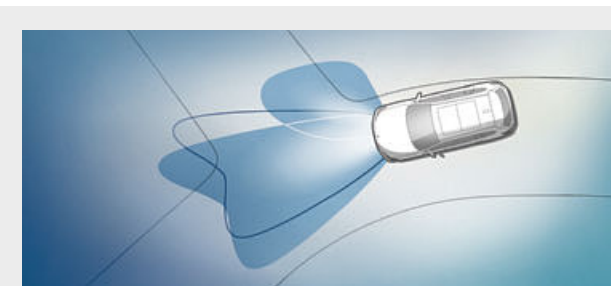
- In xDrive models, the **Hill Descent Control*** equipment can be activated to support you on steep downhill routes. The system keeps the vehicle's speed constant without you having to brake, so that you can focus your attention entirely on steering.
- The **Parking assistant*** makes parallel parking easier. The system works by measuring potential spaces while driving past them at a low speed. When a suitable space has been found, the Parking Assistant takes over steering, while you are responsible for selecting the correct gear, as well as pressing the accelerator and brake.
- The **Rear view camera*** enables improved orientation when reversing at speeds below 15 km/h, for example when parking. It shows the area behind the vehicle on the Control Display. Interactive tracer lines for measuring distance and turning circles assist you when manoeuvring. Obstacles are marked in colour.




SAFETY.

■ Standard equipment □ Optional equipment

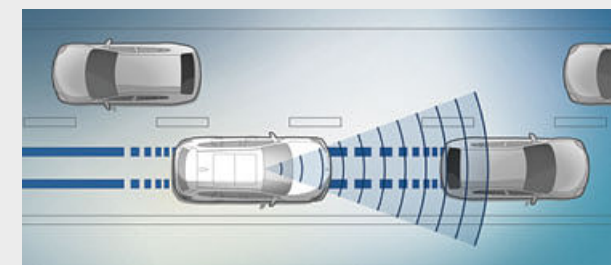




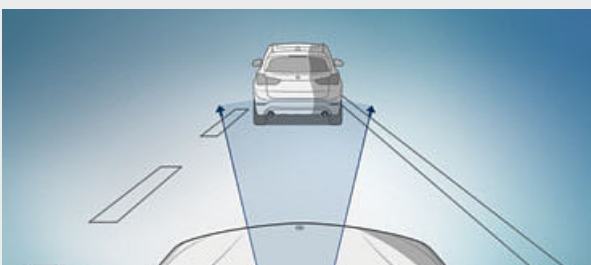
□ **Adaptive LED headlights** with low-beam and high-beam headlights include LED turn indicators, adaptive light control and High-beam assistant.



□ Every second counts in case of an emergency. **Intelligent Emergency Call*** reacts automatically if an accident occurs, quickly getting help for you and your passengers.



□ **Approach control warning with light city braking function*** notifies drivers of potential collisions and even brakes automatically in emergency situations.



□ **Active Guard** includes front collision warning with braking function and the Speed Limit Assist incl. Speed Limit Info with No-overtaking indicator.

¹ Function may be limited in darkness, fog or bright glare.

*The availability of some equipment features and functions depends on engine variants or additional options. The market and production availability may vary. You can find detailed information about terms, standard and optional equipment at www.bmw.com or from your BMW Partner.

The Standard and Optional equipment may differ between countries. Please consult your local BMW partner for more information.

CONNECTIVITY AND INFOTAINMENT.

BMW ConnectedDrive Connected to be free.



NAVIGATION PLUS.

□ Navigation Plus* features a BMW Head-Up Display¹, an iDrive Controller, a built-in 10.25" touch display and an instrument cluster with high-resolution 5.7" TFT display*. The system is operated intuitively using either the iDrive Controller, the direct menu control buttons and six or eight functional bookmarks, voice control or the touchscreen with interactive tiles.

DISPLAY, OPERATING CONCEPT.

■ In line with the state-of-the-art driver orientation in a BMW, all displays and controls are neatly arranged and within easy reach. They are clearly grouped into the four major categories of driving, comfort, display and operation. This means that new drivers can quickly find their bearings and the amount of time their eyes are diverted from the road is kept to a minimum.

BMW HEAD-UP DISPLAY.

□ The full-colour BMW Head-Up Display^{1,*} projects information relevant to the journey directly into your field of vision, thereby allowing you to fully concentrate on driving. The display includes information such as the current speed, navigation directions, Speed Limit Info incl. no-overtaking indicator, along with telephone and entertainment lists.

TELEPHONY WITH WIRELESS CHARGING.

□ Telephony with wireless charging³ includes a wireless charging dock and an additional USB port. A roof aerial connection improves mobile reception. Two mobile telephones and an audio player can be connected simultaneously via Bluetooth. Also included are: Bluetooth Office and the technical capacity for a WiFi hotspot.

PREPARATION FOR APPLE CAR PLAY®.

□ Why go without the features of your iPhone in your BMW when you can continue operating it as usual? The preparation for Apple CarPlay^{®2} gives you remote access to telephony as well as apps like iMessage, WhatsApp, TuneIn, Spotify and Apple Music. You can also use the voice button on the steering wheel to access Siri, Apple's voice assistant.

BMW CONNECTED.

□ Connect with your BMW. The BMW Connected app* is your digital mobility assistant which takes care of your needs before and during your journey. Access your car using your smartphone, smartwatch, Amazon Echo or Google Assistant, send destinations to the navigation system or receive reminders for meetings to make sure you arrive there on time.

¹ The information in the BMW Head-Up Display is not fully visible when viewed through polarised sunglasses. Content shown will depend on the equipment options chosen. Further optional equipment is required to display specific items.

² Apple CarPlay® compatibility and supported functions depend on the model year and the software installed on the iPhone®. When the Apple CarPlay® preparation is in use, selected vehicle data is transferred to the phone. The mobile phone manufacturer is responsible for any further processing of the data.

³ Supports inductive charging for Qi-compatible mobile phones. Special charging cases are available from Original BMW Accessories for selected smartphones that do not support the Qi standard for inductive charging.

COMFORT AND FUNCTIONALITY.

■ Standard equipment □ Optional equipment

□ The **Automatic tailgate operation** allows users to open and close the tailgate electrically – all that is required is the push of a button in the interior or on the vehicle key. It can also be opened using the outside handle, and closed using a button on the inside of the tailgate. An acoustic warning signal increases safety.

□ The **Comfort access system** allows passengers to enter the vehicle via the front doors and to open the tailgate without having to actively use the key. The key must simply be nearby, in the driver's trouser pocket for example. To unlock the doors, it is only necessary to touch the handles or the tailgate button.

□ When open, the **Panorama glass roof** provides a great deal of fresh air. Closed, it creates a bright, light-flooded atmosphere in the interior. It opens and closes completely automatically at the push of a button, or remotely, and is equipped with slide and lift functions, roller sunblind and wind deflector.

□ **Options for using the boot space** are particularly flexible thanks to the numerous ways in which the rear seats can be adjusted to either increase leg room for the rear passengers or maximise loading space in the luggage compartment, whichever has priority. The 60:40 splitting rear seat can be slid forward or back by up to 130 mm. The rear seat backrest can even be folded down in a 40:20:40 split.

□ The **Automatic air conditioning** with 2-zone control and automatic target temperature control features separate controls for you and your front passenger. It also includes Automatic Air Recirculation (AAR), a Micro-activated carbon particulate filter, a fogging and solar sensor, as well as rear air vents.

□ The atmospheric **Lights package*** contains various LED lights and yields an ambience of pure quality in the interior. The six selectable light designs light up the interior with a stylish combination of direct and indirect lights. Additionally, you are greeted with an impressive welcome display of the exterior LEDs incl. "X1" LED projection.



*The availability of some equipment features and functions depends on engine variants or additional options. The market and production availability may vary. You can find detailed information about terms, standard and optional equipment at www.bmw.com or from your BMW Partner.

Some ConnectedDrive Services may differ between countries. Please consult your local BMW partner for more information.

BASE.

Discover even more with the new BMW Brochures app. Available now, for your smartphone and tablet.

■ Standard equipment □ Optional equipment



■ The standard steering wheel in three-spoke design features a steering wheel rim made of black leather and has a diameter of 375 millimetres.

- Selected base model equipment features:**
- 17" light alloy wheels V-spoke style 560
 - Standard seat for driver and front passenger in Cloth 'Grid'
 - Interior trim finishers Oxide Silver dark matt with highlight trim finisher Black high-gloss
 - Halogen headlights with daytime running lights in LED technology
 - Leather steering wheel
 - Driving Experience Control incl. ECO PRO
 - Performance Control
 - Air conditioning
 - Rain sensor
 - AM/FM radio with 6.5" Control Display and six loudspeakers



■ The seat height and backrest angle of the Standard seat for the driver and front passenger, along with the fore-and-aft position and headrest height, can be manually adjusted.



■ 17" light alloy wheels V-spoke style 560 Reflex Silver, wheel size 7.5J x 17 with 225/55 R17 tyres.



□ 19" light alloy wheels Y-spoke style 580 Bicolour Orbit Grey with runflat tyres, gloss-lathed, 8J x 19 with 225/45 R19 tyres.

Discover even more with the new BMW Brochures app. Available now, for your smartphone and tablet.

■ Standard equipment □ Optional equipment



■ The black Sport leather steering wheel with three spokes features a Chrome decorative trim. A thick rim and contoured thumb rests provide an exceptionally pleasant, high-grip feel. The gear lever also comes in leather.



□ The Sport seats for driver and front passenger are characterised by seat and backrest bolsters that are larger than those on the standard seats and, together with adjustable thigh support, for excellent ergonomics and better lateral support during fast cornering. In addition to the seat depth (mechanical), the backrest width (electric) can also be adjusted on the driver's seat.

xLine exterior equipment:

- BMW kidney grille with exclusively designed vertical slats with front sides in Aluminium matt, grille frame in Chrome high-gloss
- Front bumper with sump guard and other design elements in Silver matt
- 18" light alloy wheels Y-spoke style 579; other wheels available
- Side skirt trim in Silver matt
- Sump guard in the back with main part in body colour and inset trim painted Silver

xLine interior equipment:

- Door sill finishers, front with Aluminium finishers and "BMW" designation
- Seats in Cloth-/leather combination 'Cross Track' in Granite Brown with Black accent, alternatively Leather 'Dakota' with perforations¹; other upholsteries available
- Sport leather steering wheel
- Vehicle key with Pearl Chrome detailing
- Accent stitchings depending on the upholstery; in Silver, Grey and Brown on the centre console and the instrument panel*
- Interior trim finishers in 'Pearl' dark with accent in Pearl Chrome; other trims available
- Exclusive LED optical fibre in the door trims with six selectable light designs
- Loading sill trim in stainless steel

- 18" light alloy wheels Y-spoke style 579 Bicolour Orbit Grey, gloss-lathed, wheel size 7.5J x 18 with 225/50 R18 tyres.



¹ Available as optional equipment.
*The availability of some equipment features and functions depends on engine variants or additional options. The market and production availability may vary. You can find detailed information about terms, standard and optional equipment at www.bmw.com or from your BMW Partner.

The Standard and Optional equipment may differ between countries. Please consult your local BMW partner for more information.

SPORT LINE.

Discover even more with the new BMW Brochures app. Available now, for your smartphone and tablet.

■ Standard equipment □ Optional equipment



□ The M Leather steering wheel including multifunction buttons, an M badge and an integrated driver-side airbag is featured in three-spoke design. With a steering wheel rim in leather ‘Walknappa’ Black with black stitching and contoured thumb rests, it provides a direct, athletic steering experience.



■ The Sport seats for driver and front passenger are characterised by seat and backrest bolsters that are larger than those on the standard seats and, together with adjustable thigh support, for excellent ergonomics and better lateral support during fast cornering. In addition to the seat depth (mechanical), the backrest width (electric) can also be adjusted on the driver’s seat.

Sport Line exterior equipment:

- BMW kidney grille with exclusively designed vertical slats in Black high-gloss, grille frame in Chrome high-gloss
- Front bumper with specific design elements in Black high-gloss, Sump guard in body colour
- LED fog lights
- 18" light alloy wheels Double-spoke style 568; other wheels available
- Mirror caps in body colour, alternatively in Black high-gloss
- Side skirt trim in body colour
- Sump guard in the back with main part in body colour and inset trim in black high-gloss

Sport Line interior equipment:

- Door sill finishers, front with Aluminium finishers and “BMW” designation
- Sport seats in Cloth/Sensatec combination Anthracite with Grey highlight; other upholsteries available
- Sport leather steering wheel
- Vehicle key with Pearl Chrome detailing
- Accent stitchings depending on the upholstery; in Silver, Grey and Brown on the centre console and the instrument panel
- Interior trim finishers black high-gloss, other trims available
- Exclusive LED optical fibre in the door trims with six selectable light designs
- Loading sill trim in stainless steel



■ 18" light alloy wheels Double-spoke style 568 Ferric Grey, gloss-lathed, 7.5J x 18 with 225/50 R18 tyres.



□ 18" light alloy wheels Y-spoke style 566 Ferric Grey, gloss-lathed, wheel size 7.5J x 18 with 225/50 R18 tyres.

M SPORT PACKAGE.

Discover even more with the new BMW Brochures app. Available now, for your smartphone and tablet.

■ Standard equipment □ Optional equipment



■ The M Leather steering wheel including multifunction buttons, an M badge and an integrated driver-side airbag is featured in three-spoke design. With a steering wheel rim in leather ‚Walknappa‘ Black with black stitching and contoured thumb rests, it provides a direct, athletic steering experience.



■ The Sport seats for driver and front passenger are characterised by seat and backrest bolsters that are larger than those on the standard seats and, together with adjustable thigh support, for excellent ergonomics and better lateral support during fast cornering. In addition to the seat depth (mechanical), the backrest width (electric) can also be adjusted on the driver's seat.

M Sport package exterior equipment:

- M Aerodynamics package with front apron, side skirts, wheel arch trim and cladding in body colour, rear apron with diffuser insert in Dark Shadow metallic
- BMW kidney grille with exclusively designed vertical slats with front sides in Black high-gloss, grille frame in Chrome high-gloss
- LED fog lights
- 18" M light alloy wheels Double-spoke style 570 M Bicolour; other wheels available
- M Sport suspension, lowered, alternatively Standard running gear
- BMW Individual high-gloss Shadow Line
- M logo on the sides
- Paintwork in Alpine White uni; other paintworks available
- BMW Individual roof rails high-gloss Shadow Line

M Sport package interior equipment:

- M door sill finishers, M driver footrest
- Floor mats in M design
- Sport seats for driver and front passenger in cloth 'Micro Hexagon'/ Sensatec Black; other upholsteries available
- M Leather steering wheel
- Vehicle key with exclusive M designation*
- BMW Individual headliner anthracite
- Interior trim finishers in Aluminium Hexagon with highlight trim finishers in Blue; other trims available
- Shortened gear lever with M designation
- Exclusive LED optical fibre in the door trims with six selectable light designs
- Loading sill trim in stainless steel



■ 18" M light alloy wheels Double-spoke style 570 M Bicolour Ferric Grey, gloss-lathed, wheel size 7.5J x 18 with 225/50 R18 tyres.



□ 19" M light alloy wheels Double-spoke style 816 M Bicolour Orbit Grey with run-flat properties, gloss-lathed, wheel size 8J x 19 with 225/45 R19 tyres.

*The availability of some equipment features and functions depends on engine variants or additional options. The market and production availability may vary. You can find detailed information about terms, standard and optional equipment at www.bmw.com or from your BMW Partner.

The Standard and Optional equipment may differ between countries. Please consult your local BMW partner for more information.

ADDITIONAL EQUIPMENT.

Discover even more with the new BMW Brochures app. Available now, for your smartphone and tablet.

■ Standard equipment □ Optional equipment



□ The black Sport leather steering wheel with three spokes features a Chrome decorative trim. A thick rim and contoured thumb rests provide an exceptionally pleasant, high-grip feel. The gear lever also comes in leather.



□ Where to next? Search for new destinations using the BMW Connected* app and send them directly to your BMW's navigation system. Once you are in the car and it has established a Bluetooth connection with your smartphone, you can launch route guidance with a single tap.



□ When open, the Panorama glass roof provides a great deal of fresh air. Closed, it creates a bright, light-flooded atmosphere in the interior. It opens and closes completely automatically at the push of a button, or remotely, and is equipped with slide and lift functions, roller sunblind and wind deflector.



□ The full-colour BMW Head-Up Display^{1,*} projects information relevant to the journey directly into your field of vision, thereby allowing you to fully concentrate on driving. The display includes information such as the current speed, navigation directions, Speed Limit Info incl. no-overtaking indicator, along with telephone and entertainment lists.



□ The 7-speed Steptronic transmission with double clutch technology* combines the best efficiency with particularly smooth gearshifts and outstanding driving comfort, thanks to tightly spaced gear ratios and fast engine speed transitions. It therefore unites superb comfort with impressive dynamics and increased fuel efficiency.



□ The Sport seats for driver and front passenger are characterised by seat and backrest bolsters that are larger than those on the standard seats and, together with adjustable thigh support, for excellent ergonomics and better lateral support during fast cornering. In addition to the seat depth (mechanical), the backrest width (electric) can also be adjusted on the driver's seat.



□ From the daytime running lights to the low-beams and high-beams, all of the functions in the LED headlights have a longer lifespan and save more energy thanks to LED technology. The dynamic, flat headlights feature increased visibility at night and in bad weather thanks to excellent illumination with a light colour similar to daylight.



□ The two-part Rear lights with LED technology* in characteristic L design consist of one lighting segment in the body of the vehicle and one in the tailgate. Thanks to the dynamic brake light function, the drivers of vehicles behind are warned by flashing brake lights should the vehicle brake hard in a hazardous situation.



■ The Rain sensor including automatic headlight activation automatically activates the windscreen wipers and the low-beam headlights.



□ Child seat ISOFIX attachment: for mounting an ISOFIX child seat to the front passenger seat. The attachment latch is concealed in the seating frame.



□ The passenger-seat with foldable backrest increases flexibility when loading longer objects.



□ When not in use, the removable ball head of the trailer tow hitch has no negative impact on the sporty appearance of the rear.

¹ The information in the BMW Head-Up Display is not fully visible when viewed through polarised sunglasses. Content shown will depend on the equipment options chosen. Further optional equipment is required to display specific items.
* The availability of some equipment features and functions depends on engine variants or additional options. The market and production availability may vary. You can find detailed information about terms, standard and optional equipment at www.bmw.com or from your BMW Partner.

Some ConnectedDrive Services may differ between countries. Please consult your local BMW partner for more information.
The Standard and Optional equipment may differ between countries. Please consult your local BMW partner for more information.

ADDITIONAL EQUIPMENT.

Discover even more with the new BMW Brochures app. Available now, for your smartphone and tablet.

■ Standard equipment □ Optional equipment



□ The HiFi loudspeaker system Harman Kardon, with twelve speakers optimally designed to suit the interior's sound characteristics, guarantees an exceptional music experience. Tweeters and subwoofers deliver a brilliant, powerful range of sound. Elegant aluminium loudspeaker fronts feature "Harman/Kardon" lettering for a high-class look.



□ Navigation Plus* features a BMW Head-Up Display¹, an iDrive Controller, a built-in 10.25" touch display and an instrument cluster with high-resolution 5.7" TFT display. The system is operated intuitively using either the iDrive Controller, the direct menu control buttons and six or eight functional bookmarks, voice control or the touchscreen with interactive tiles.



□ The interior mirror and driver-side exterior mirror feature the automatic anti-dazzle function. Additionally, the driver-side exterior mirror features the automatic curb parking function when the vehicle is put in reverse. Both exterior mirrors are equipped with an electric folding function, as well as a mirror memory function. That makes parking easier and helps to avoid damage to the vehicle.



□ The atmospheric Lights package* contains various LED lights and yields an ambience of pure quality in the interior. The six selectable light designs light up the interior with a stylish combination of direct and indirect lights. Additionally, you are greeted with an impressive welcome display of the exterior LEDs incl. "X1" LED projection.



□ Depending on the equipment, Multifunction for steering wheel can be used to operate the telephone, voice control and audio functions via the buttons on the steering wheel. The Manual Speed Limiter is also integrated. It can be used to set an upper limit of 50 km/h for city driving, for example.



□ Why waste time in traffic jams? Real Time Traffic Information* lets you reach your destination faster and more effectively. It monitors the current traffic situation virtually in real-time and calculates alternative routes. The local hazard warning system is an additional feature that alerts you to adverse road conditions or accidents.



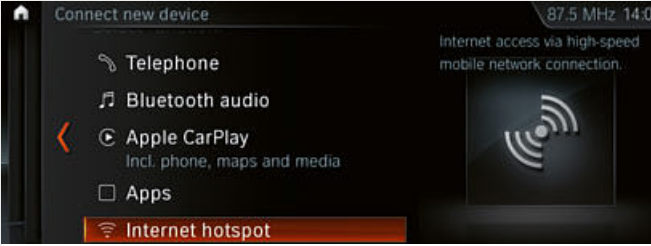
□ The Steering-wheel heating* quickly warms up the rim of the steering wheel at the push of a button, which is especially comfortable in winter.



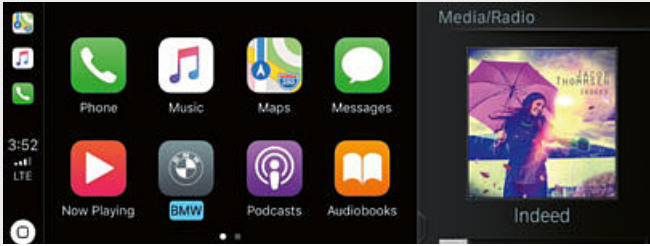
□ The electric seat adjustment is easy to use and the memory function allows users to save their preferred settings for the seat and exterior mirrors.



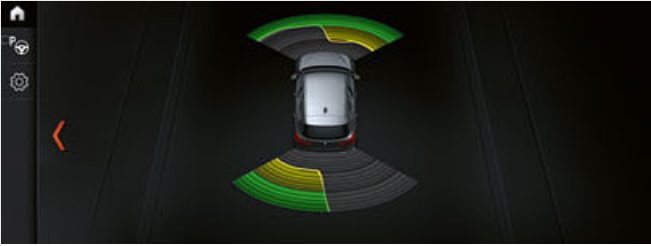
□ The Driving Assistant Plus⁴* equipment provides a clear improvement in safety and comfort. It includes the Approach control warning and Person warning with light city braking function, Lane Departure Warning, the High-beam assistant, the Speed Limit Info, camera-based Cruise control with Stop&Go function as well as the Traffic jam assistant.



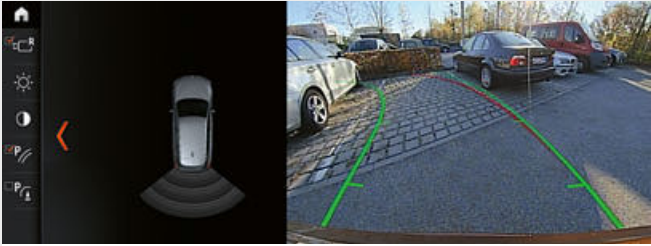
□ Take part in video conference calls on your tablet or stream the final episode of your favourite series on your smartphone. The Wi-Fi Hotspot²* is a way to go online with LTE speed (if available) using the SIM card installed in your vehicle. You and your fellow passengers can surf the Web on up to ten devices.



□ Why go without the features of your iPhone in your BMW when you can continue operating it as usual? The preparation for Apple CarPlay³* gives you remote access to telephony as well as apps like iMessage, WhatsApp, TuneIn, Spotify and Apple Music. You can also use the voice button on the steering wheel to access Siri, Apple's voice assistant.



□ Front and rear Park Distance Control (PDC)* makes parking and manoeuvring in tight spaces much easier. The proximity of obstacles is signalled acoustically through a warning sound, and the remaining distance is shown in the Control Display.



□ The Rear view camera* enables improved orientation when reversing at speeds below 15 km/h, for example when parking. It shows the area behind the vehicle on the Control Display. Interactive tracer lines for measuring distance and turning circles assist you when manoeuvring. Obstacles are marked in colour.

¹ The information in the BMW Head-Up Display is not fully visible when viewed through polarised sunglasses. Content shown will depend on the equipment options chosen. Further optional equipment is required to display specific items.
² The WiFi hotspot enables in-vehicle internet usage with the highest LTE standard. Usage incurs additional charges.
³ Apple CarPlay® compatibility and supported functions depend on the model year and the software installed on the iPhone®. When the Apple CarPlay® preparation is in use, selected vehicle data is transferred to the phone. The mobile phone manufacturer is responsible for any further processing of the data.
⁴ Function may be limited in darkness, fog or bright glare.

*The availability of some equipment features and functions depends on engine variants or additional options. The market and production availability may vary. You can find detailed information about terms, standard and optional equipment at www.bmw.com or from your BMW Partner.
The Standard and Optional equipment may differ between countries. Please consult your local BMW partner for more information.

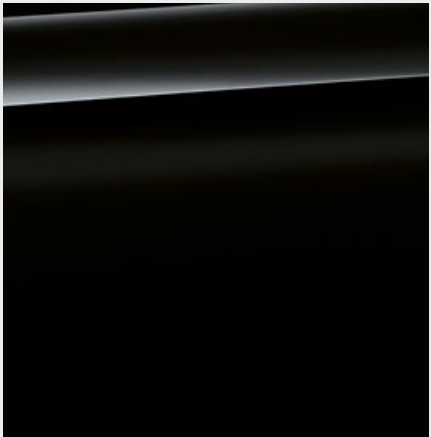
EXTERIOR COLOUR WORLD.

Discover even more with the new BMW Brochures app. Available now, for your smartphone and tablet.

■ Standard equipment □ Optional equipment



□ Non-metallic 300 Alpine White¹



■ Non-metallic 668 Black



□ Metallic A96 Mineral White²



□ Metallic A83 Glacier Silver



□ Metallic B39 Mineral Grey²



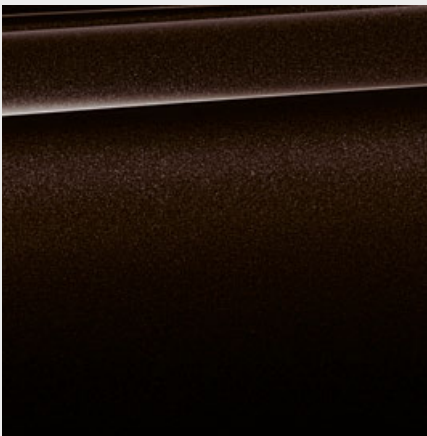
□ Metallic 475 Black Sapphire²



□ Metallic C2S Jucaro Beige



□ Metallic C07 Sparkling Storm brilliant effect



□ Metallic B53 Sparkling Brown

M SPORT PACKAGE

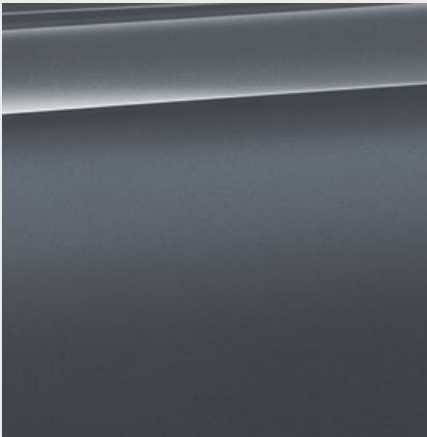


□ Metallic C10 Mediterranean Blue



□ Metallic C1D Misano Blue³

BMW INDIVIDUAL



□ BMW Individual C3N Storm Bay metallic²



□ Metallic C1X Sunset Orange

[Colour samples] These colour samples are intended as an initial guide to the colours and materials available for your BMW. However, experience has shown that printed versions of paint, upholstery and interior trim colours cannot in all cases faithfully reproduce the appearance of the original colour. Please discuss your preferred colour choices with your BMW partner or in your dealership. There you can also see original samples and be assisted with special requests.

¹ Standard for M Sport package.
² Also optionally available for the M Sport package.
³ Exclusively available for the M Sport package.

The Standard and Optional equipment may differ between countries. Please consult your local BMW partner for more information.

INTERIOR COLOURS.

Discover even more with the new BMW Brochures app. Available now, for your smartphone and tablet.

■ Standard equipment □ Optional equipment



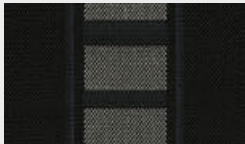
CLOTH

Available with



■ Base

Cloth 'Grid'
EGAT Anthracite*



□ Base

Cloth 'Race'
ERL1 Anthracite/
Grey highlight*

LEATHER

Available with



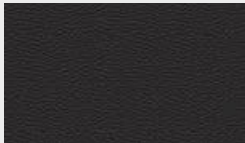
□ xLine
□ Sport Line
□ M Sport package

Leather 'Dakota'
PDOA with
perforations Oyster
and Grey highlight



□ xLine
□ Sport Line
□ M Sport package

Leather 'Dakota'
PDMZ with
perforations Mocha



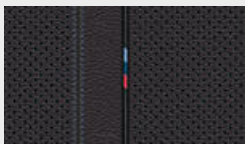
□ Base

Leather 'Dakota'
LCSW Black



□ xLine
□ Sport Line
□ M Sport package

Leather 'Dakota'
PDSW with
perforations Black
and Grey highlight



□ M Sport package

Leather 'Dakota'
PDN4 with
perforations Black,
Blue highlight

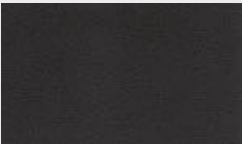
SENSATEC

Available with



□ Base
□ xLine
□ Sport Line

Sensatec
KCCX Oyster

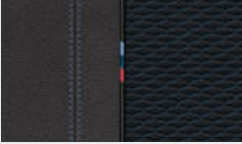


□ Base
□ xLine
□ Sport Line
□ M Sport package

Sensatec
KCSW Black

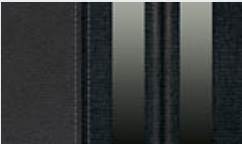
CLOTH-SENSATEC COMBINATION

Available with



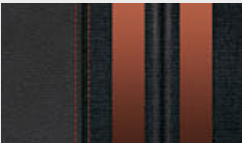
■ M Sport package

Cloth 'Micro
Hexagon' HKSW
Sensatec Black



□ Base
■ Sport Line

Cloth/Sensatec
combination KFL1
Anthracite, accent
Grey*



□ Sport Line

Cloth/Sensatec
combination KFIX
Anthracite, accent
Orange

CLOTH/LEATHER COMBINATION

Available with



■ xLine

Cloth-/leather
combination 'Cross
Track' CWG4
Granite Brown/Black

INTERIOR TRIM FINISHERS

Available with



■ Base

Interior trim finishers
Oxide Silver dark
matt with highlight
trim finisher Black
high-gloss



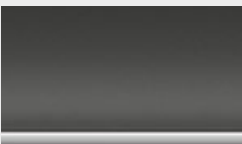
□ Base
□ xLine
□ Sport Line
□ M Sport package

Interior trim finishers
Aluminium, finely
brushed lengthwise
with highlight trim
finishers Pearl
Chrome



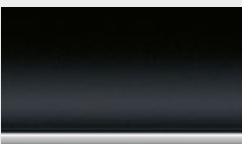
■ M Sport package

Interior trim finishers
Aluminium Hexagon
with highlight trim
finisher Blue matt



■ xLine

Interior trim finishers
'Pearl' dark with
highlight trim finisher
Pearl Chrome



□ Base
■ xLine
■ Sport Line
■ M Sport package

Interior trim finishers
black high-gloss
with highlight trim
finisher Pearl
Chrome



□ Base
□ xLine
□ Sport Line
□ M Sport package

Interior trim
designed in fine-
wood trim 'Fineline'
Stream with accent
in Pearl Chrome



□ Base
□ xLine
□ Sport Line
□ M Sport package

Interior trim finishers
in fine-wood trim
oak grain matt with
highlight trim finisher
Pearl Chrome

Please note that even normal long- or short-term use can lead to unrecoverable upholstery damage. This can be caused in particular by non-colourfast clothing. Please note that the interior colour depends on the selected upholstery colour.

*The availability of some equipment features and functions depends on engine variants or additional options. The market and production availability may vary. You can find detailed information about terms, standard and optional equipment at www.bmw.com or from your BMW Partner.

The Standard and Optional equipment may differ between countries. Please consult your local BMW partner for more information.

WHEELS AND TYRES.

Discover even more with the new BMW Brochures app. Available now, for your smartphone and tablet.



□ 17" light alloy wheels Double-spoke style 564 Reflex Silver with runflat tyres, wheel size 7.5J x 17 with 225/55 R17 tyres.



■ 18" light alloy wheels Double-spoke style 568 Ferric Grey, gloss-lathed, 7.5J x 18 with 225/50 R18 tyres.²



□ 18" light alloy wheels Double-spoke style 578 Jet Black, wheel size 7.5J x 18 with 225/50 R18 tyres.



□ 18" M light alloy wheels Double-spoke style 570 M Bicolour Ferric Grey with runflat tyres, gloss-lathed, 7.5J x 18 with 225/50 R18 tyres.¹



□ 19" light alloy wheels Y-spoke style 511 Orbit Grey with runflat tyres, gloss-lathed, 8J x 19 with 225/45 R19 tyres.



□ 19" light alloy wheels Y-spoke style 580 Bicolour Orbit Grey, gloss-lathed, 8J x 19 with 225/45 R19 tyres.



□ 19" M light alloy wheels Double-spoke style 816 M Bicolour Orbit Grey, gloss-lathed, wheel size 8J x 19 with 225/45 R19 tyres.¹

ORIGINAL BMW ACCESSORIES.

■ Standard equipment □ Optional equipment ○ Accessories



○ This contemporary roof box in Black with titanium silver side trims has a 520-litre capacity and fits all BMW roof rack systems. It can be opened from both sides and features triple central locking on each side which makes it easy to load and provides anti-theft locking.



○ The universal holder is adjustable in terms of size and is attached to the separately available basic carrier or to the optional equipment "Travel & Comfort". It provides a secure hold for a wide range of Apple or Samsung tablets with BMW safety case from 7" to 11". It can be rotated by 360° and locked in any desired inclination.



○ This innovative vehicle interior mirror incorporates an adaptive universal remote control for up to three garage doors and property gates.



○ The floating hub cap consists of the BMW logo that no longer turns with the wheel but instead remains level.



○ The high-quality 20" M light alloy wheels Double-spoke 717 M are designed in Jet Black matt, weight-optimised with flow forming and with M logo. TPMS summer complete wheel set with run-flat tyres, wheel size 8J x 20 with tyre size 225/40 R20 94Y RSC.



○ Precisely fitting protection against moisture and dirt in the front footwell. Featuring a black design with a stainless steel inlay, they perfectly complement the interior.



○ Anti-slip, water-resistant mat for protecting the luggage compartment from dirt and moisture. In black with stainless steel inlay matching the interior.

¹ Only available in conjunction with M Sport package.
² Only available in conjunction with Sport Line.
The Standard and Optional equipment may differ between countries. Please consult your local BMW partner for more information.

BMW X1		sDrive18i		sDrive20i		xDrive20i		xDrive25i		sDrive16d		sDrive18d		xDrive18d		sDrive20d		xDrive20d		xDrive25d	

Weight																					
Unladen weight EU¹	kg	1475 [1505]	[1560]	[1645]	[1655]	1555 [1575]	1580 [1615]	1655 [1680]	[1625]	[1690]	[1695]										
Maximum permissible weight	kg	2000 [2025]	[2065]	[2155]	[2160]	2040 [2040]	2090 [2125]	2170 [2190]	[2130]	[2200]	[2180]										
Permitted load	kg	600 [595]	[580]	[585]	[580]	560 [540]	585 [585]	590 [585]	[580]	[585]	[560]										
Permitted trailer load, unbraked²	kg	735 [750]	[750]	[750]	[750]	750 [750]	750 [750]	750 [750]	[750]	[750]	[750]										
Permitted trailer load, braked, max. 12% gradient/max. 8% gradient²	kg	1700/1700 [1700/1700]	[1800/1800]	[2000/2000]	[2000/2000]	1700/1700 [1700/1700]	1800/1800 [1800/1800]	1800/1800 [1800/1800]	[1800/1800]	[2000/2000]	[2000/2000]										
Luggage compartment capacity	l	505–1550	505–1550	505–1550	505–1550	505–1550	505–1550	505–1550	505–1550	505–1550	505–1550										

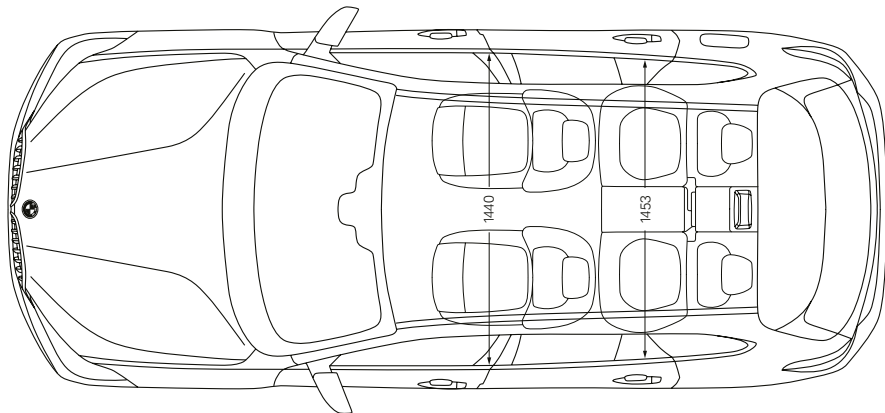
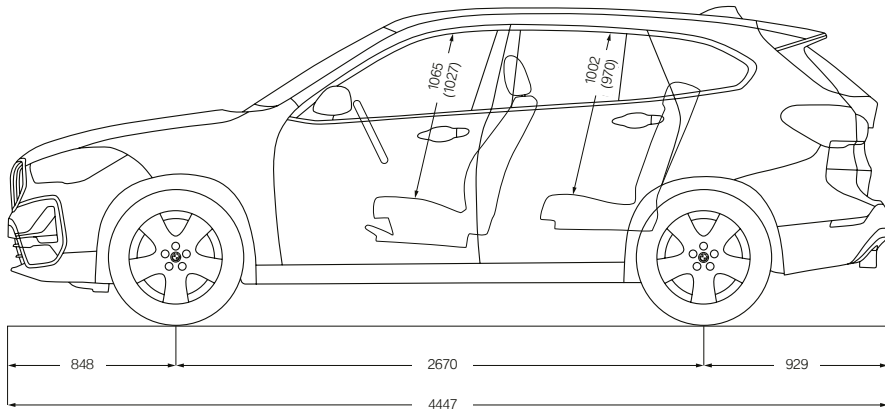
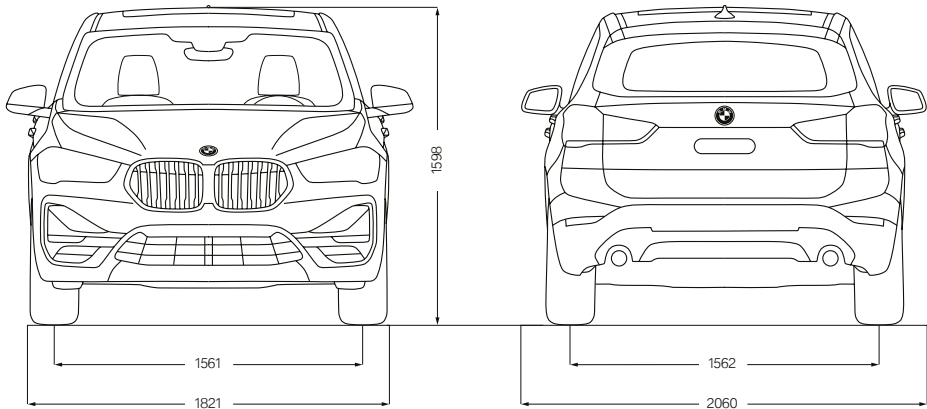
BMW TwinPower Turbo engine³																					
Cylinders/valves	–	3/4	4/4	4/4	4/4	3/4	4/4	4/4	4/4	4/4	4/4										
Capacity	cm³	1499	1998	1998	1998	1496	1995	1995	1995	1995	1995										
Max. output/engine speed	kW (hp)/rpm	103 (140)/4600–6500	141 (192)/5000–6000	141 (192)/5000–6000	170 (231)/5000–6000	85 (116)/4000	110 (150)/4000	110 (150)/4000	140 (190)/4000	140 (190)/4000	170 (231)/4400										
Max. torque/engine speed	Nm/rpm	220/1480–4200	280/1350–4600	280/1350–4600	350/1450–4500	270/1750–2250	350/1750–2500	350/1750–2500	400/1750–2500	400/1750–2500	450/1500–3000										

Power transmission																					
Type of drive	–	Front-wheel	Front-wheel	All-wheel	All-wheel	Front-wheel	Front-wheel	All-wheel	Front-wheel	All-wheel	All-wheel										
Standard transmission	–	6-speed manual	7-speed Steptronic with double clutch	8-speed Steptronic	8-speed Steptronic	6-speed manual	6-speed manual	6-speed manual	8-speed Steptronic	8-speed Steptronic	8-speed Steptronic										

Performance																					
Top speed	km/h	205 [203]	[226]	[223]	[235]	190 [190]	205 [205]	204 [204]	[222]	[219]	[235]										
Acceleration 0–100 km/h	s	9.7 [9.7]	[7.7]	[7.4]	[6.5]	11.5 [11.5]	9.3 [9.4]	9.3 [9.4]	[7.9]	[7.8]	[6.6]										

Consumption³·⁴ – All engines conform to the EU6 standard																					
Urban	l/100 km	6.9–7.3 [6.8–7.0]	[6.8–7.1]	[7.2–7.7]	[7.6–7.8]	4.7–5.0 [4.6–4.8]	4.9–5.3 [4.9–5.2]	5.3–5.6 [5.1–5.6]	[5.0–5.3]	[5.3–5.6]	[5.5–5.9]										
Extra-urban	l/100 km	4.7–5.1 [4.6–4.9]	[5.4–5.4]	[5.7–6.1]	[5.6–6.2]	3.8–4.1 [3.9–4.2]	4.0–4.2 [4.0–4.4]	4.5–4.7 [4.4–4.6]	[4.1–4.4]	[4.3–4.7]	[4.5–4.8]										
Combined	l/100 km	5.5–5.9 [5.4–5.7]	[5.7–6.1]	[6.3–6.7]	[6.3–6.8]	4.1–4.4 [4.2–4.4]	4.3–4.6 [4.4–4.7]	4.8–5.0 [4.7–5.0]	[4.4–4.7]	[4.7–5.0]	[4.9–5.2]										
Exhaust emissions standard (type-certified)	–	– ⁵	– ⁵	– ⁵	– ⁵	– ⁵	– ⁵	– ⁵	– ⁵	– ⁵	– ⁵										
Combined CO₂ emissions	g/km	125–134 [122–129]	[129–138]	[143–152]	[144–155]	107–116 [109–116]	113–121 [114–122]	125–131 [122–130]	[116–124]	[123–131]	[128–136]										
Tank capacity, approx.	l	51	51	61	61	51	51	51	51	51	51										

Wheels/tyres																					
Tyre dimensions	–	225/55 R 17 W	225/55 R 17 W	225/55 R 17 W	225/55 R 17 W	225/55 R 17 W	225/55 R 17 W	225/55 R 17 W	225/55 R 17 W	225/55 R 17 W	225/55 R 17 W										
Wheel size	–	7.5 J x 17	7.5 J x 17	7.5 J x 17	7.5 J x 17	7.5 J x 17	7.5 J x 17	7.5 J x 17	7.5 J x 17	7.5 J x 17	7.5 J x 17										
Material	–	Light alloy	Light alloy	Light alloy	Light alloy	Light alloy	Light alloy	Light alloy	Light alloy	Light alloy	Light alloy										



The figures for performance, fuel consumption and CO₂ emissions refer to vehicles with standard transmission. Figures in [] are for vehicles with Steptronic transmission.

¹ The EC unladen weight refers to a vehicle with standard equipment and does not include any optional extras. The unladen weight includes a 90% full tank and a driver weight of 75 kg. Optional equipment may affect the weight of the vehicle, the payload and the top speed if the selected equipment has an impact on the vehicle's aerodynamics.

² The actual total weight of the trailer must not exceed the maximum trailer load, taking into account the maximum tow bar download.

³ Performance data of petrol engines apply to vehicles using RON 98 fuel. Fuel consumption data apply to vehicles using reference fuels in accordance with EU Regulation 2007/715. Unleaded RON 91 and higher with a maximum ethanol content of 10% (E10) may also be used. BMW recommends RON 95 super unleaded petrol.

⁴ The data for fuel consumption, CO₂ emissions and energy consumption are determined in accordance with the measurements processes as defined by European Regulation (EU) 2007/715 in the applicable version. Data refer to a vehicle with base-level equipment in Germany, and the ranges account for differences according to the selected wheel and tyre size and the optional equipment and may change during the configuration process. Figures have been determined on the basis of the new WLTP test cycle and have been converted back into NEDC figures for comparability. [For these vehicles, values other than those specified here may apply for the assessment of taxes and other vehicle-related charges that are (also) based on CO₂ emissions].

⁵ Provisional figures; any missing figures were unavailable at the time of publication.

BMW X1 xDrive20i with xLine:

BMW TwinPower Turbo 4-cylinder petrol engine, 141 kW (192 hp), 19" light alloy wheels Y-spoke style 580 Bicolour, exterior colour in Storm Bay metallic, Sport seats in leather 'Dakota' with perforations Oyster/Grey highlight, interior trim finishers in Fine-wood trim oak grain matt with highlight trim finisher Pearl Chrome.

The models illustrated in this brochure show the equipment and configuration options (standard and optional) for vehicles produced by BMW AG for the German market. Alterations in standard and optional equipment and the configurations available for the different models, as described in this brochure, may occur after 04/29/2019, the date when this brochure went to press, or according to the specific requirements of other markets. Your local BMW Partner is available to provide further details. Subject to change in design and equipment.

© BMW AG, Munich, Germany. Not to be reproduced wholly or in part without prior written permission of BMW AG, Munich.

411 001 129 20 1 2019 CB. Printed in Germany 2019.